

MWP-1R SERIES

1.8 TO 3.0 TON



Ergonomic tiller head



Wide range of batteries



High degree of stability even with large loads



High level of agility with tiller always active as a standard feature



Single or tandem load wheels and pallet entry rollers

The MWP-1R series consists of two truck families developed for two different applications:

- MWP18-1R and MWP20-1R are suitable for standard applications
- MWP22-1R and MWP30-1R are the best solution for maximum warehouse productivity

Both families have been designed for moving pallets or reels inside the stocking area and for loading/unloading lorries. We offer a range of compact DIN or British Standard batteries for less intensive usage or larger batteries for continuous operations.

The low mounting position of the tiller allows an operator to adjust it to the most suitable height for comfortable operation. The ergonomically designed tiller head, complete with large traction control butterfly and touch-sensitive hydraulic control buttons is rated to IP54, being easy to operate even when wearing gloves.

The chassis are made of high quality steel using the latest welding techniques; the battery covers manufactured of polyurethane, whose strength and flexibility reduce the impact of accidental collisions. The fork material is high-strength "Domex Steel", and any unpainted parts have been treated with anti-rust protection.

The chassis have been designed with 3 contact points to provide maximum agility and stability, and because the tiller is active even when in the vertical position, the trucks are able to maneuver in spaces of 1114 mm fitted with 800 mm forks.

Each family has a selected latest generation MOSFET control system, permitting smoother handling and a greater flexibility of use. The operational parameters can be adjusted by the Service Engineer using the console to suit the specific needs of the application. The electronic system includes a full self-diagnostic facility, built-in hourmeter, battery discharge and a service code indicators. The lift function locks

out when the battery reaches maximum discharge prior to requiring re-charging.

The trucks also feature four braking systems:

- Regenerative Braking, operated by releasing or reversing the direction of travel
- Electro-magnetic brake, operated by completely releasing the tiller to the vertical or switching off the truck
- Optional mechanical brake, operated by simply releasing the traction control butterfly

The traction motor is a separately excited motor (SEM) which, including the brushes, is guaranteed for two years or 5,000 hours; the advanced logic controls all motor functions and ensures consistent performance with or without load.

The MWP-1R models offer a wide selection of optional equipment.

- Cold Store protection to -30°C
- Tandem load wheels (std. on the MWP30-1R)
- Pallet entry rollers (std. on the MWP30-1R)
- On-board battery charger (not on cold store version)
- Traction wheels in special material
- Wide selection of fork lengths with spreads of 520 / 560 / 650 mm
- Mechanical brake operated by releasing the traction control butterfly
- Braking proportional to the load on the forks therefore providing more controllable braking (MWP18S20-1R)

Do not hesitate to contact your nearest Komatsu Forklift dealer to arrange a visit by one of expert team who can analyze your requirements and recommend the best solution for you in terms of investment and application.

Our web site www.komatsuforklift.net provides full information of our dealers and the complete range of Komatsu Forklift products. You can also register to gain access to the special reserved sections of the web site, which will provide up to the minute information on our new products and local promotions.

MWP-1R SERIES

1.8 TO 3.0 TON



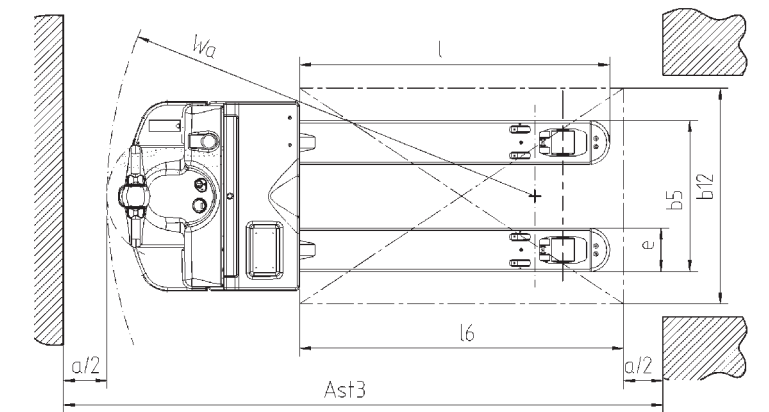
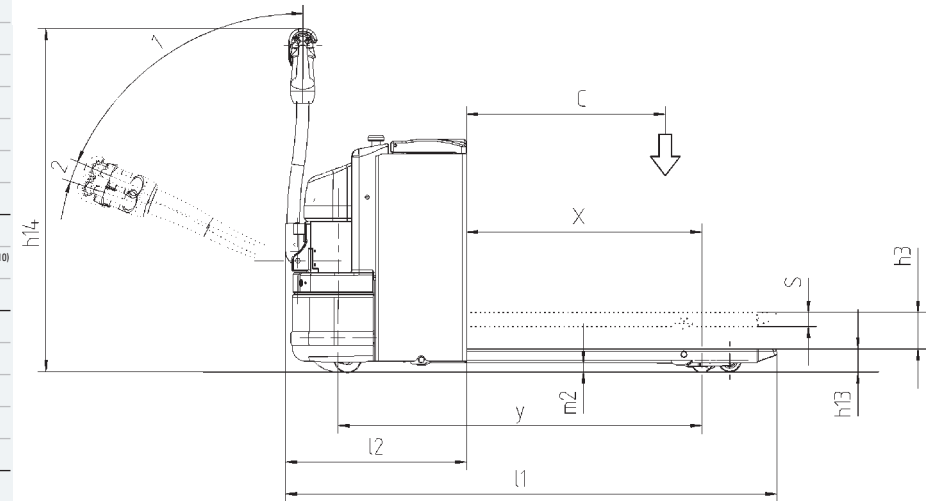
Electric Pedestrian Low Lift Pallet Truck

- Six different versions ranging from 1.8 to 3.0 Tonnes with standard or compact chassis
- Uniquely designed tiller with a low mounting position for maximum maneuverability
- Tiller always active even in the vertical position as a standard feature for operating in confined areas
- Tiller with IP54 rated, touch-sensitive buttons and built-in controls, easily operated even with gloves.
- Chassis width of only 710 mm
- Powerful SEM traction motors guaranteed for 2 years or 5,000 hours of operation including brushes.

MWP-1R SERIES

1.8 TO 3.0 TON

CHARACTERISTICS		Compact			Compact		Compact				
		MWP 18-1R	MWP 18-1R	MWP 20-1R	MWP 22-1R	MWP 22-1R	MWP 30-1R	MWP 30-1R			
1.2	Model Designation										
1.3	Motive Power Type	Electric									
1.4	Operator Position	tiller									
1.5	Rated Capacity	Q (t)	1,8	2	2,2	3					
1.6	Load Centre	c (mm)	600 ⁽¹⁾								
1.8	Load Distance	x (mm)	872								
1.9	Wheel Base	y (mm)	1239 ⁽²⁾	1306 ⁽³⁾	1306	1347	1419	1347	1419		
WEIGHTS	2.1	Service Weight (Incl. Battery Weight, Line 6.5)	kg	273	283	286	329	338	354	363	
	2.2	Axle loading with Load (driver/load side) (1)	kg	702/1495 ⁽⁴⁾	707/1526 ⁽⁵⁾	748/1688 ⁽⁸⁾	854/1887 (860/1889) ⁽⁹⁾	890/1936 (903/1940) ⁽¹⁰⁾	1037/2529 (1043/2531) ⁽⁹⁾	1065/2586 (1077/2591) ⁽¹⁰⁾	
	2.3	Axle loading without Load (driver/load side)	kg	308/89 ⁽⁴⁾	332/100 ⁽⁵⁾	332/104 ⁽⁸⁾	411/130 (417/132) ⁽⁹⁾	469/157 (482/161) ⁽¹⁰⁾	432/134 (438/136) ⁽⁹⁾	490/161 (503/165) ⁽¹⁰⁾	
TYRES	3.1	Tyre Type (P=pneum; S=solid; C=elast.cushion)	Polyurethane								
	3.2	Tyre Size, driver side	mm	230 / 100			250 / 100				
	3.3	Tyre Size, load side	mm	85 X 90			85 X 70				
3.5	Number of Wheels (x=driven), driver/load side		1x-2 / 2			1x-2 / 4					
DIMENSIONS	3.7	Tread, load side	b ₁₁ (mm)	358 / 398 / 488		358 / 398 / 488		358 / 398 / 488		359 / 398 / 488	
	4.4	Lift Height	h ₃ (mm)	135							
	4.9	Height of Tiller in drive Position (min./max.)	h ₁₄ (mm)	762 / 1232			1183 / 1380				
	4.15	Height Lowered	h ₁₃ (mm)	85							
	4.19	Overall Length	l ₁ (mm)	1693	1760	1819	1891	1819	1891	1891	
	4.20	Length to front Face of Forks	l ₂ (mm)	543	610	671	743	671	743	743	
	4.21	Overall Width	b ₁ (mm)	710							
	4.22	Fork Dimensions: thickness/width/length	s/e/l (mm)	50 / 162 / 1150 ⁽⁶⁾							
	4.25	Width over Forks	b ₅ (mm)	520 / 560 / 650							
	4.32	Ground Clearance at Centre of Wheelbase	m ₂ (mm)	168							
4.33	Aisle Width with Pallet (1000x1200mm) (I6xb12)	Ast ₃ (mm)	1791	1858	1912 ⁽¹¹⁾	1984 ⁽¹¹⁾	1912 ⁽¹¹⁾	1984 ⁽¹¹⁾	1984 ⁽¹¹⁾		
4.34	Aisle Width with Pallet (800x1200mm) (I6xb12)	Ast ₃ (mm)	1991	2058	2112	2184	2112	2184	2184		
4.35	Outer Turning Radius (min.)	W _a (mm)	1464	1531	1584	1656	1584	1656	1656		
PERFORMANCES	5.1	Travel Speed (loaded/unloaded)	km/h	6 / 6		5,5 / 6		6/6			
	5.2	Lifting Speed (loaded/unloaded)	m/s	0,034 / 0,045		0,033 / 0,076		0,03 / 0,076			
	5.3	Lowering Speed	m/s	0,045 / 0,045							
	5.7	Gradeability (loaded/unloaded)	%	0,9 / 19 ⁽⁴⁾	0,8 / 17 ⁽⁵⁾	0,5 / 17 ⁽⁸⁾	0,4 / 17		0,3 / 17		
	5.8	Max.gradeability (loaded/unloaded)	%	5,3 / 21 ^{(7) (4)}	5,0 / 21 ^{(7) (5)}	4,5 / 21 ^{(7) (8)}	8 / 20 ⁽⁷⁾		7 / 20 ⁽⁷⁾		
	5.10	Brake Type (parking/service)		Electromagnetic / Reverse Current Brake							
EL-MOTORS	6.1	Drive Motor, output S2 60 min	kW	1		1,2		2,5			
	6.2	Hydraulic Motor, output S3 15%	kW	1,2		2,2					
	6.3	Battery to DIN 43531/35/36/A, B, C, no		British Standard		DIN 43535 B					
	6.4	Battery Voltage, Nom. capacity K5	V / Ah	24 / 110 (150)	24 / 160 (220 - 250)	24 / 160 (220 - 250)	24 / 220 (250)	24 / 330 (375)	24 / 220 (250)	24 / 330 (375)	
	6.5	Battery Weight (min.)	kg	123 (152)	150 (212 - 217)	150 (212 - 217)	212 (220)	288 (305)	212 (220)	288 (305)	
OTHERS	8.1	Type of Control, drive/hydraulic		Mosfet							
	8.4	Noise Level at Driver's Ear	dB (A)	< 70							



(1) Data related to forks l=1150mm
 (2) with British Standard Battery
 (3) with DIN battery
 (4) with battery 24 V / 110 Ah

(5) with battery 24 V / 160 Ah
 (6) refer to enclosed table for different fork length
 (7) max gradeability permitted by truck geometry unloaded and with raised forks

(8) with battery 24 V / 160 Ah
 (9) with battery DIN standard 24 V / 220 Ah (250 Ah)
 (10) with battery DIN large 24 V / 330 Ah (375 Ah)
 (11) with forks l = 980 mm

TRUCK SPECIFICATIONS WITH DIFFERENT FORKS DEPENDING UPON SIZE OF BATTERY COMPARTMENT

Please refer to actual Pricelist for availability of forks as Standard or as Special Request



AVAILABLE b ₅ 520-560-650 mm	MWP18-1R Compact						MWP18-1R & MWP20-1R			standard for MWP22-1R optional for MWP30-1R			standard for MWP30-1R optional for MWP22-1R		
	British Standard 24V 100/150Ah						DIN Standard 24V 160/250Ah			DIN Standard 24V 220/250Ah			DIN Large 24V 330/375Ah		
	l	c	x	y	l ₁	W _a	y	l ₁	W _a	y	l ₁	W _a	y	l ₁	W _a
	800	400	521	889	1343	1114	956	1410	1181	997	1469	1234	1100	1541	1306
	980	500	701	1069	1523	1294	1136	1590	1361	1177	1649	1414	1280	1721	1486
	1150	600	871	1239	1693	1464	1306	1760	1531	1347	1819	1584	1450	1891	1656
	1450	715	1171	1539	1993	1764	1606	2060	1831	1647	2119	1884	1750	2191	1956
	1600	800	1321	1689	2143	1914	1756	2210	1981	1797	2269	2034	1900	2341	2106
	1980	1000	1701	2069	2523	2294	2136	2590	2361	2177	2649	2414	2280	2721	2486
	1980 pc	1000	1357	1725	2523	1950	1792	2590	2017	1829	2649	2066	1932	2721	2138
	2160	1072,5	1881	2249	2703	2474	2316	2770	2541	2357	2829	2594	2460	2901	2666
	2160 pc	1072,5	1537	1905	2703	2130	1972	2770	2197	2009	2829	2246	2112	2901	2318
	2400	1200	2121	2489	2943	2714	2556	3010	2781	2597	3069	2834	2700	3141	2906
	2400 pc	1200	1777	2145	2943	2370	2212	3010	2437	2249	3069	2486	2352	3141	2558

pc = short step forks -> load wheels are more close to traction wheel and Wa is reduced

Wa value has been calculated with tiller in vertical position